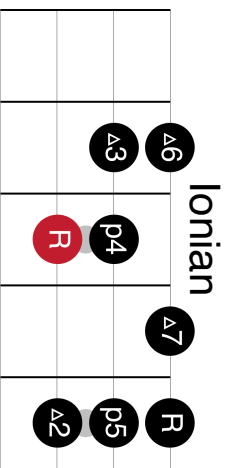


The Modes Of C Major

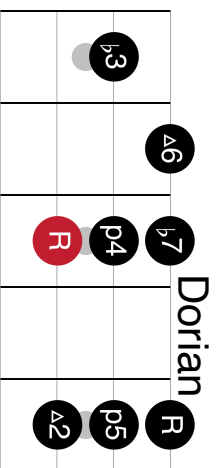
With triads, chords & arpeggios

NOTES →		C	D	E	F	G	A	B
1	Mode	C Ionian	D Dorian	E Phrygian	F Lydian	G Mixolydian	A Aeolian	B Locrian
2	Triad	C	Dm	Em	F	G	Am	B diminished
3	7th Arpeggio	CMaj7	Dm7	Em7	FMaj7	G7	Am7	Bm7b5
4	Roman Numeral	I	ii	iii	IV	V	vii	vii



3

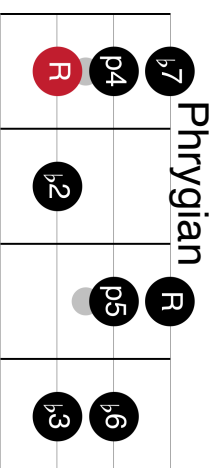
5



3

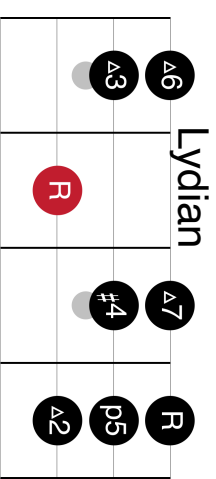
5

7



7

9

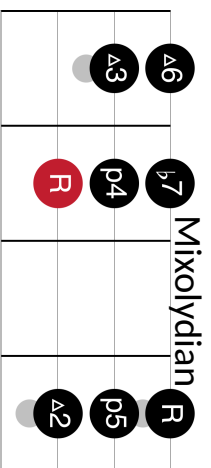


7

9

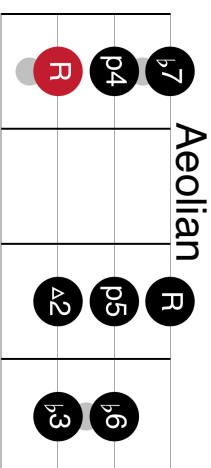


OnlineBassCourses.com



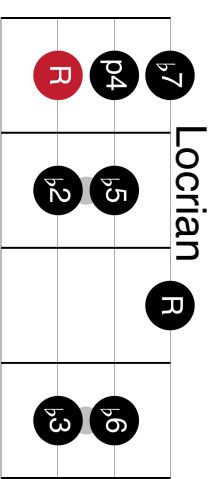
9

12



12

15



15

17

How To Use Modes For Bass Players

IV V (Lydian to Mixolydian)

Dan Hawkins

F G F G



A bass staff in 4/4 time with a treble clef. The staff contains four measures of rhythmic notation, each represented by four diagonal slashes. Above the staff, the letters 'F', 'G', 'F', and 'G' are positioned above the first, second, third, and fourth measures respectively.

F G F G



A bass staff with four measures of rhythmic notation, each represented by four diagonal slashes. Above the staff, the letters 'F', 'G', 'F', and 'G' are positioned above the first, second, third, and fourth measures respectively. The staff ends with a double bar line and repeat dots.

How To Use Modes For Bass Players

ii V (Dorian to Mixolydian)

Dan Hawkins

Dm7 Dm7 G7 G7



How To Use Modes For Bass Players

iii IV (Phrygian to Lydian)

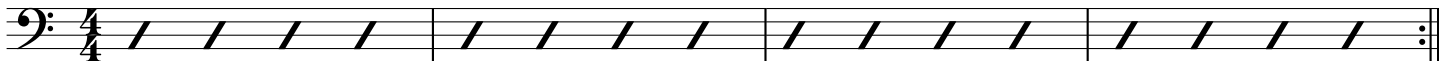
Dan Hawkins

Em7

Em7

FMaj7

FMaj7



How To Use Modes For Bass Players

Major ii V I

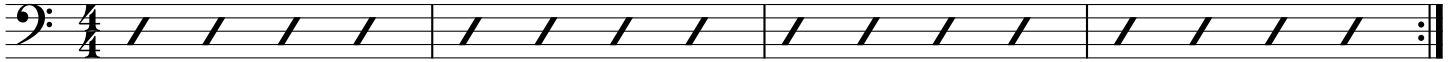
Dan Hawkins

Dm7

G7

CMaj7

CMaj7



How To Use Modes For Bass Players

Minor ii V i

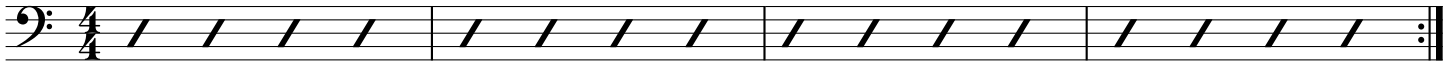
Dan Hawkins

Bm7 \flat 5

E7

Am7

Am7



How To Use Modes For Bass Players

12 Bar Blues (Mixolydian)

Dan Hawkins

B♭7 E♭7 B♭7 B♭7



E♭7 E♭7 B♭7 B♭7



F7 E♭7 B♭7 F7



How To Use Modes For Bass Players

Modal Interchange

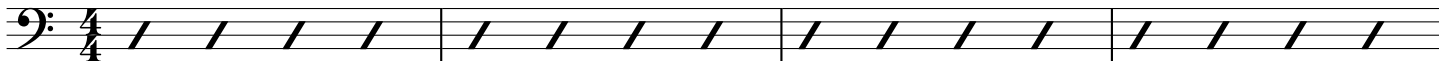
Dan Hawkins

CMaj7

CMaj7

AMaj7

AMaj7

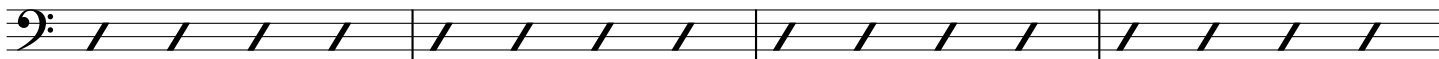


B♭m7

B♭m7

C♯m7

C♯m7



CMaj7

CMaj7

AMaj7

AMaj7

